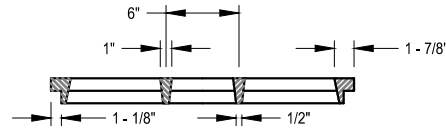


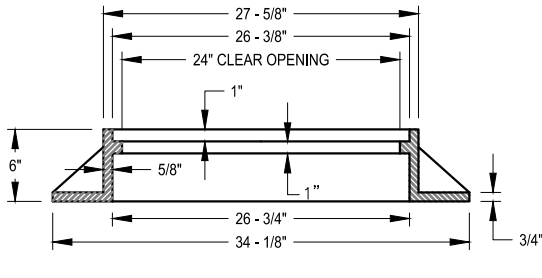
COVER SKID DESIGN DETAIL



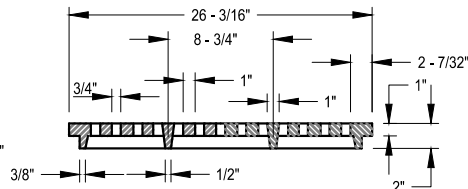
SECTION J-J

GENERAL NOTES:

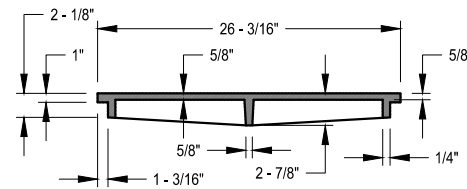
1. FRAME SHALL BE GRAY IRON CONFORMING TO A.S.T.M. A48-90, GRADE 30. THE GRATE SHALL BE DUCTILE IRON CONFORMING TO A.S.T.M. A536-84, CLASS 80-55-06.
2. METAL FRAME AND GRATE TYPE 4 SHALL ONLY BE USED WHERE SHOWN ON THE CONSTRUCTION PLANS. IT SHALL NOT BE USED AT A CURB LINE.
3. DRAINAGE SLOTS SHALL BE PLACED PARALLEL TO THE DIRECTION OF FLOW.
4. FIT TOLERANCE SHALL BE 1/8".
5. WELDING IS NOT PERMITTED.



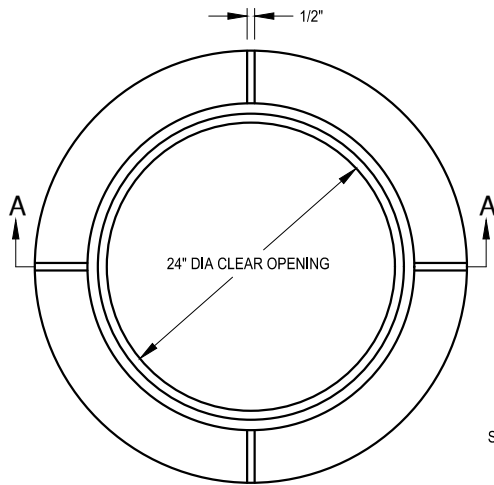
SECTION A-A



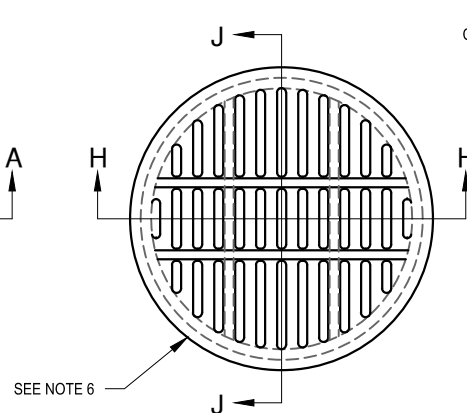
SECTION H-H



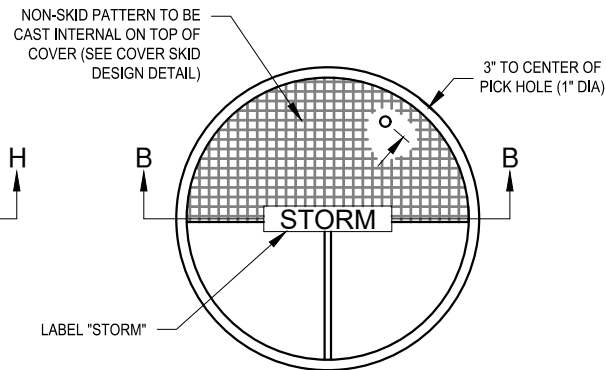
SECTION B-B



FRAME - TYPE 4
MINIMUM WEIGHT: 168 LBS



GRATE - TYPE 4



SOLID COVER
MINIMUM WEIGHT: 118 LBS



APPROVED BY:

Robert B. Blegen

ROBERT B. BLEGEN, P.E.
PUBLIC WORKS DIRECTOR

**DRYWELL FRAME
AND GRATES**

**STANDARD PLAN NO.
S-104**

PUBLICATION DATE: 03/2025

REVISION NO.: 02