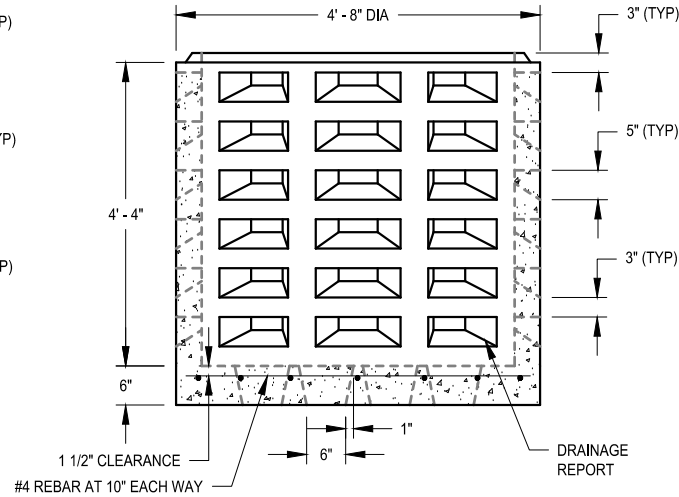
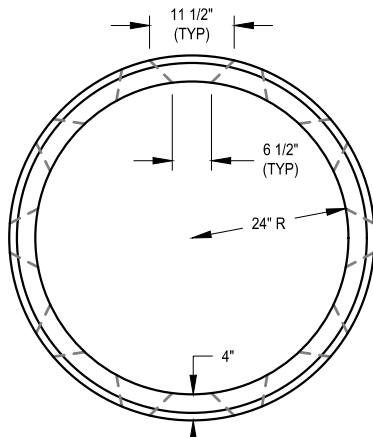


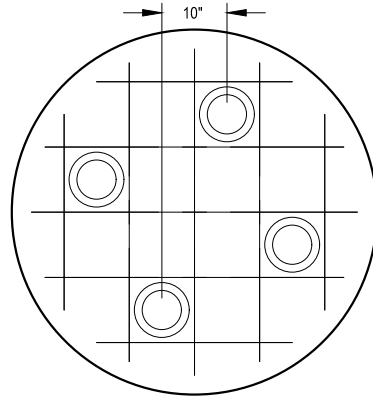
DRYWELL BARREL
(ELEVATION VIEW)



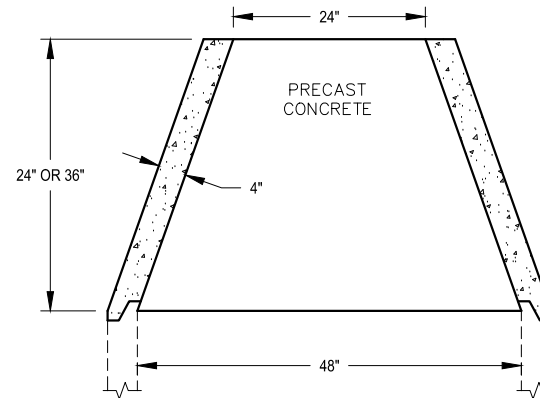
DRYWELL BASE
(ELEVATION VIEW)



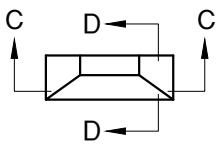
DRYWELL BARREL
(PLAN VIEW)



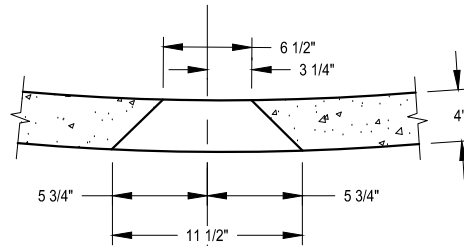
BASE DRAIN HOLE DETAIL
(PLAN VIEW)



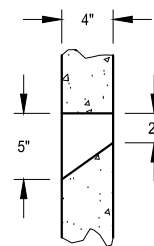
CONCENTRIC CONE



DRAINAGE PORT



SECTION C-C



SECTION D-D

GENERAL NOTES:

1. CONCRETE DRYWELL ITEMS SHALL BE CONSTRUCTED WITH THE BARRELS AND CONES REINFORCED WITH 0.12 SQ. IN. STEEL GRADE 40, PER LINEAL FOOT OF WALL.
2. TOLERANCE OF DIMENSIONS FOR DRAINAGE PORTS SHALL BE $\pm 1/2$ ".
3. EACH BARREL SECTION SHALL HAVE A MINIMUM OF 6 ROWS OF DRAINAGE PORTS VERTICALLY AND A MINIMUM OF 10 DRAINAGE PORTS AROUND THE CIRCUMFERENCE OF THE BARREL.



APPROVED BY:

Robert B. Blegen

ROBERT B. BLEGEN, P.E.
PUBLIC WORKS DIRECTOR

DRYWELL DETAILS

STANDARD PLAN NO.
S-103

PUBLICATION DATE: 03/2025

REVISION NO.: 01