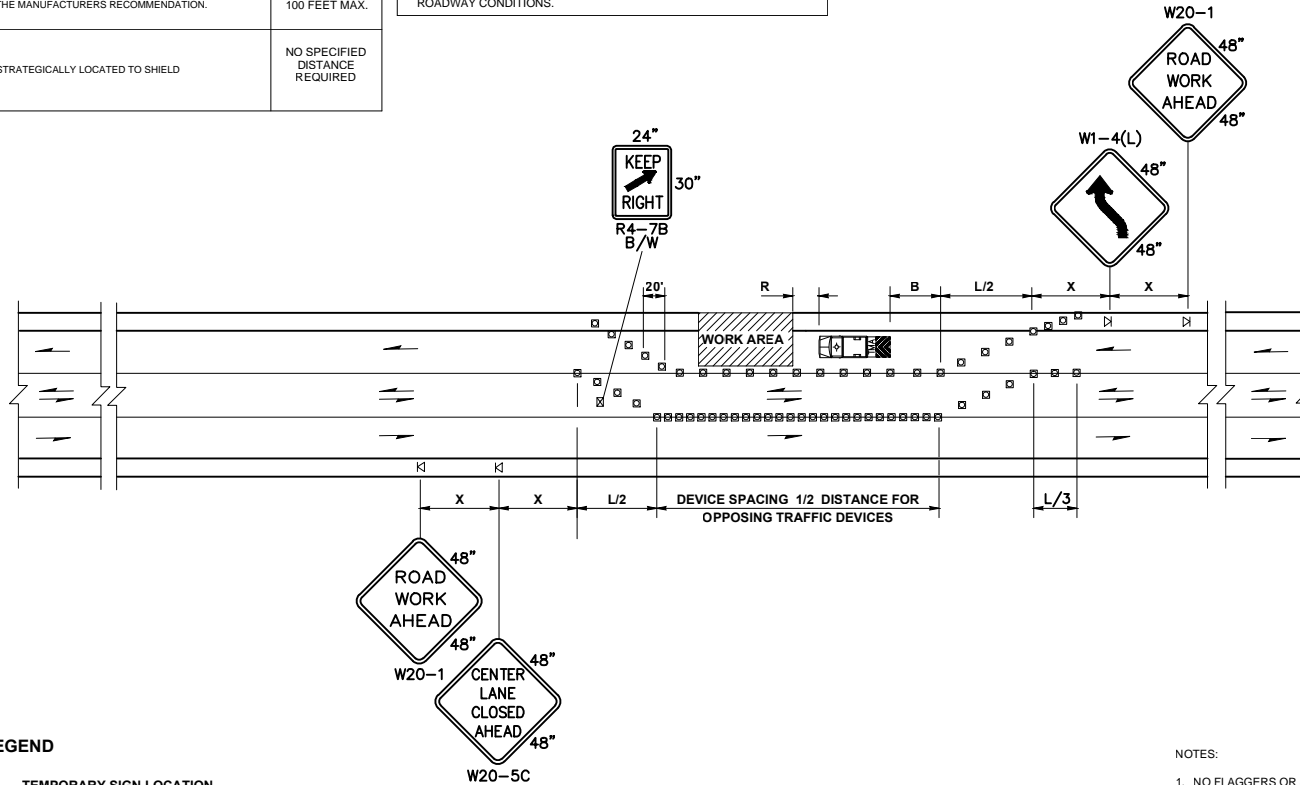


BUFFER DATA										
LONGITUDINAL BUFFER SPACE = B										
SPEED (MPH)	25	30	35	40	45	50	55	60	65	70
LENGTH (feet)	155	200	250	305	360	425	495	570	645	-
BUFFER VEHICLE ROLL AHEAD DISTANCE = R										
TRANSPORTABLE ATTENUATOR MINIMUM HOST VEHICLE WEIGHT 15,000 LBS. THE MAXIMUM WEIGHT SHALL BE IN ACCORDANCE WITH THE MANUFACTURERS RECOMMENDATION.								30 FEET MIN. TO 100 FEET MAX.		
PROTECTIVE VEHICLE MAY BE A WORK VEHICLE STRATEGICALLY LOCATED TO SHIELD THE WORK AREA.								NO SPECIFIED DISTANCE REQUIRED		

SIGN SPACING = X (1)		
RURAL HIGHWAYS	60 / 65 MPH	800'
RURAL ROADS	45 / 55 MPH	500'
RURAL ROADS & URBAN ARTERIALS	35 / 40 MPH	350'
RURAL ROADS & URBAN ARTERIALS	25 / 30 MPH	200' (2)
RESIDENTIAL & BUSINESS DISTRICTS		
URBAN STREETS	25 MPH OR LESS	100' (2)
(1) ALL SPACING MAY BE ADJUSTED TO ACCOMMODATE INTERCHANGE RAMP, AT-GRADE INTERSECTIONS AND DRIVEWAYS.		
(2) THIS SPACING MAY BE REDUCED IN URBAN AREAS TO FIT ROADWAY CONDITIONS.		

MINIMUM TAPER LENGTH = L (feet)										
LANE WIDTH (feet)	Posted Speed (mph)									
	25	30	35	40	45	50	55	60	65	70
10	105	150	205	270	450	500	550	-	-	-
11	115	165	225	295	495	550	605	660	-	-
12	125	180	245	320	540	600	660	720	780	-

CHANNELIZATION DEVICE SPACING (feet)		
MPH	TAPER	TANGENT
50/60	40	80
35/45	30	60
25/30	20	40



#### LEGEND

- TEMPORARY SIGN LOCATION
- CHANNELIZING DEVICES
- TRANSPORTABLE ATTENUATOR
- TEMPORARY SIGN LOCATION (5' MOUNTING HEIGHT)

#### NOTES:

1. NO FLAGGERS OR SPOTTERS.
2. RECOMMENDED EXTENDING DEVICE TAPER (L/3) ACROSS SHOULDER.
3. ALL SIGNS ARE BLACK ON ORANGE UNLESS OTHERWISE DESIGNATED.
4. SEE SPECIAL PROVISIONS FOR WORK HOUR RESTRICTIONS.

### TYPICAL LANE SHIFT - TWO LANE ROADWAY WITH CENTER TURN LANE

NOT TO SCALE

SV-TC-105