

WORK ZONE CONDITION (SEE CONDITION GUIDANCE)

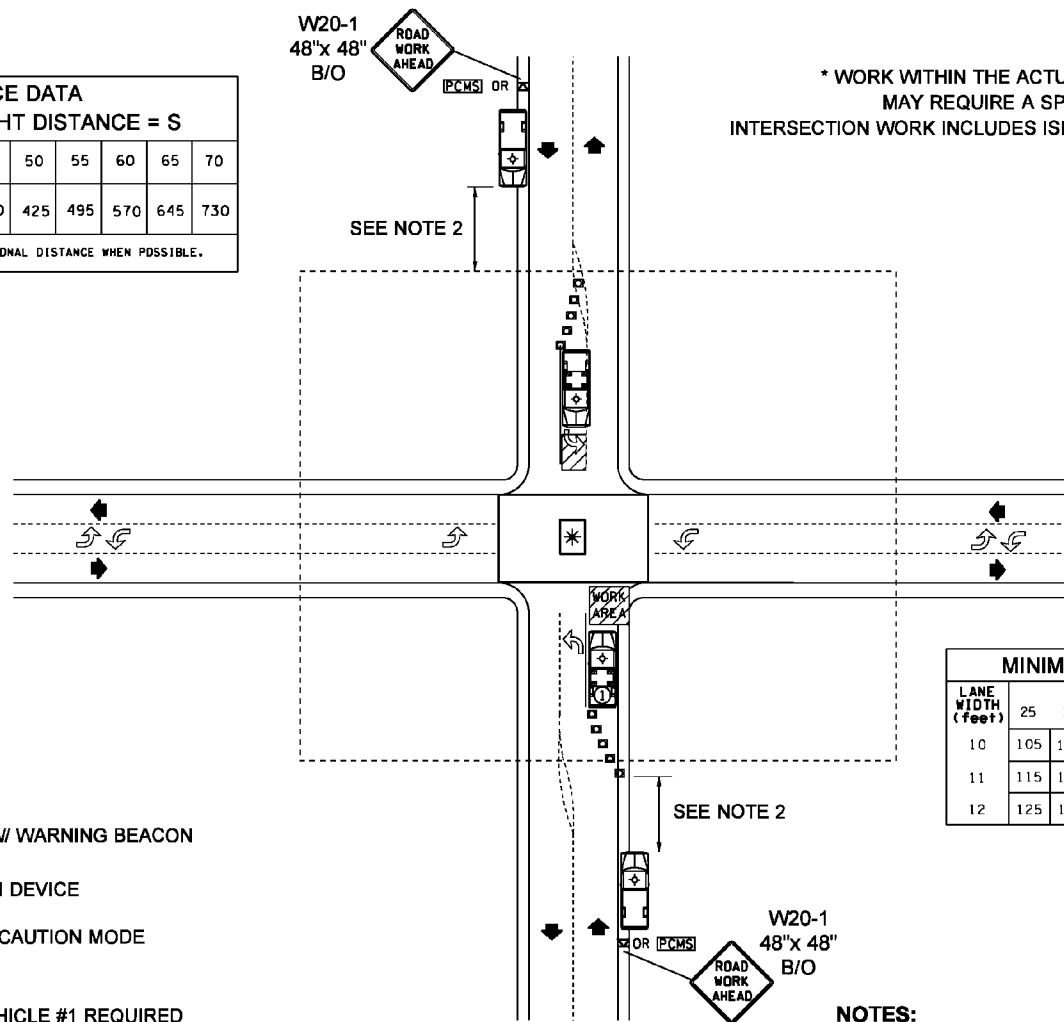
A - ALLOWED - CONSIDER USING A SPOTTER, WORK VEHICLE REQUIRED.

B - ALLOWED - SPOTTER AND/OR CHANNELIZING DEVICES RECOMMENDED, CONSIDER TMA AND/OR PCMS/ARROW CAUTION MODE.

C - ALLOWED - CHANNELIZATION DEVICES AND PCMS/ARROW (CAUTION MODE), TMA AND SPOTTER RECOMMENDED, VEHICLE #1 REQUIRED.

SIGHT DISTANCE DATA										
MINIMUM STOPPING SIGHT DISTANCE = S										
SPEED LIMIT MPH	25	30	35	40	45	50	55	60	65	70
DISTANCE FEET	155	200	250	305	360	425	495	570	645	730

DISTANCES SHOWN ARE MINIMUMS, USE ADDITIONAL DISTANCE WHEN POSSIBLE.



TYPICAL SHORT DURATION WORK OPERATION
INTERSECTION LOCATION
(SEE GUIDANCE TEXT FOR ADDITIONAL DIRECTION)
TCP 17

NOTES:

1. Work vehicle located in same quadrant as work location.
2. Restricted sight distance requires additional advance warning devices or signs. See Sight Distance Chart.