

**SIGHT DISTANCE DATA**  
**MINIMUM STOPPING SIGHT DISTANCE = S**

SPEED LIMIT MPH	25	30	35	40	45	50	55	60	65	70
DISTANCE FEET	155	200	250	305	360	425	495	570	645	730

DISTANCES SHOWN ARE MINIMUMS. USE ADDITIONAL DISTANCE WHEN POSSIBLE.

**WORK ZONE CONDITION (SEE CONDITION GUIDANCE)**

A - ALLOWED - CONSIDER USING A SPOTTER

B - ALLOWED - SPOTTER AND/OR CHANNELIZING DEVICES RECOMMENDED, CONSIDER TMA AND/OR PCMS/ARROW CAUTION MODE.

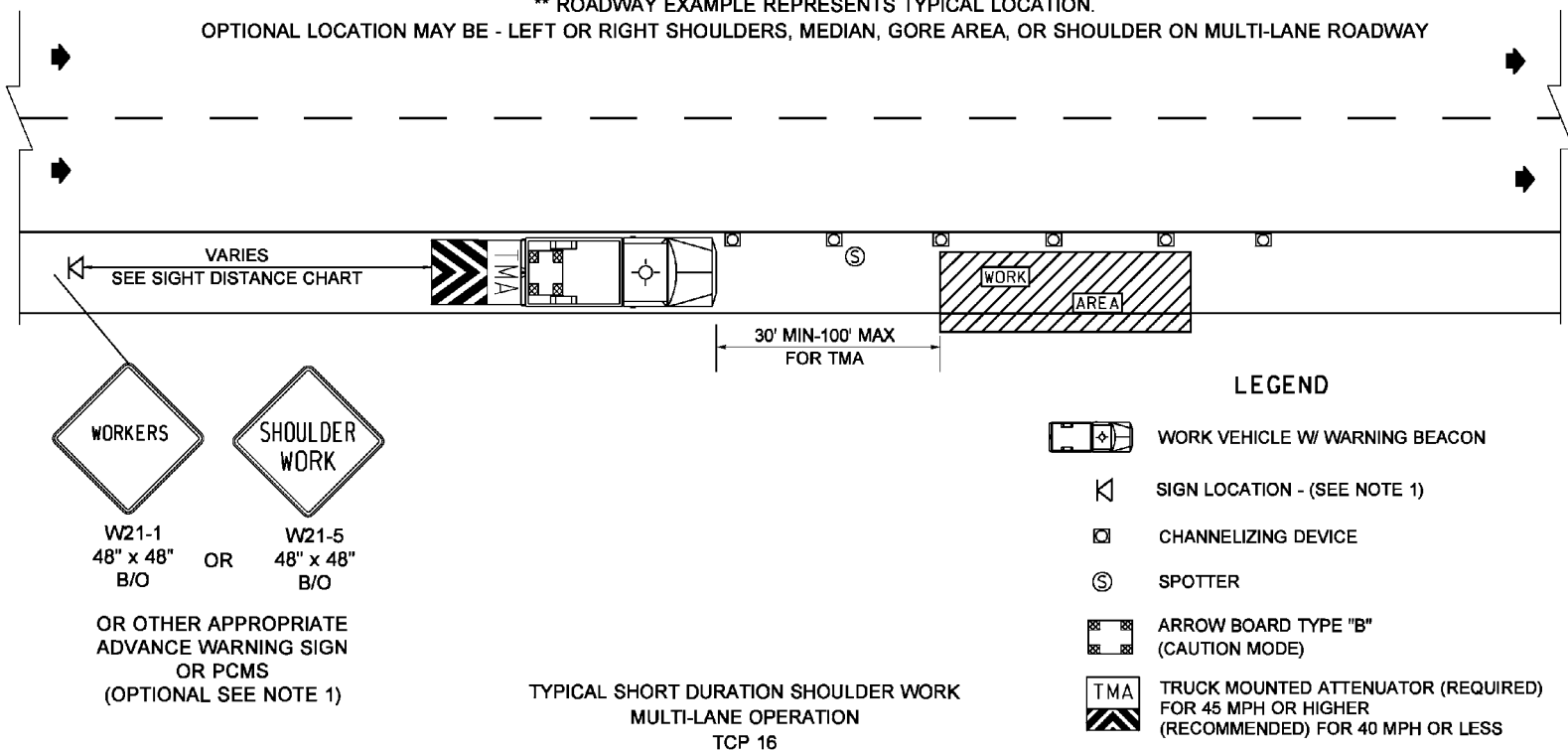
C - ALLOWED - SPOTTER, CHANNELIZATION DEVICES AND PCMS/ARROW RECOMMENDED, CONSIDER TMA.

**NOTES:**

1. RESTRICTED SIGHT DISTANCE REQUIRES ADDITIONAL ADVANCE WARNING DEVICES OR SIGNS, SEE SIGHT DISTANCE CHART.
2. NARROW SHOULDERS THAT DO NOT PROVIDE FOR WORK OPERATIONS WITHOUT LANE ENCROACHMENT - 10' LANE MINIMUM, REQUIRES LANE CLOSURE, USE TCP 14 OR 15.
3. REFER TO TAPER AND BUFFER SPACE CHARTS.
4. IF NO TMA IS AVAILABLE THE WORK VEHICLE MAY BE STRATEGICALLY PLACED TO SHIELD WORK AREA.

**\*\* ROADWAY EXAMPLE REPRESENTS TYPICAL LOCATION.**

OPTIONAL LOCATION MAY BE - LEFT OR RIGHT SHOULDERS, MEDIAN, GORE AREA, OR SHOULDER ON MULTI-LANE ROADWAY



**TCP 16 – Typical Short Duration Shoulder Work (Multi-Lane Application)**