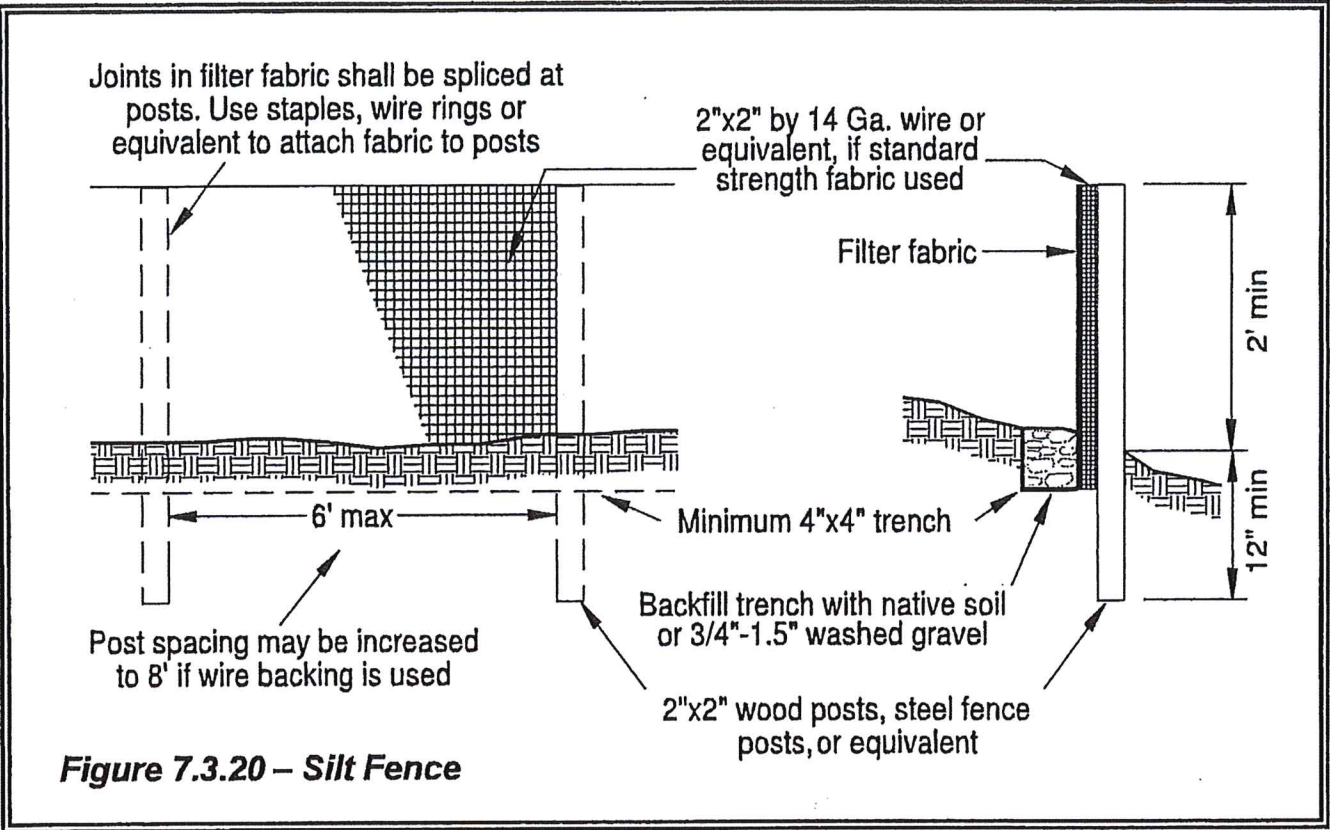
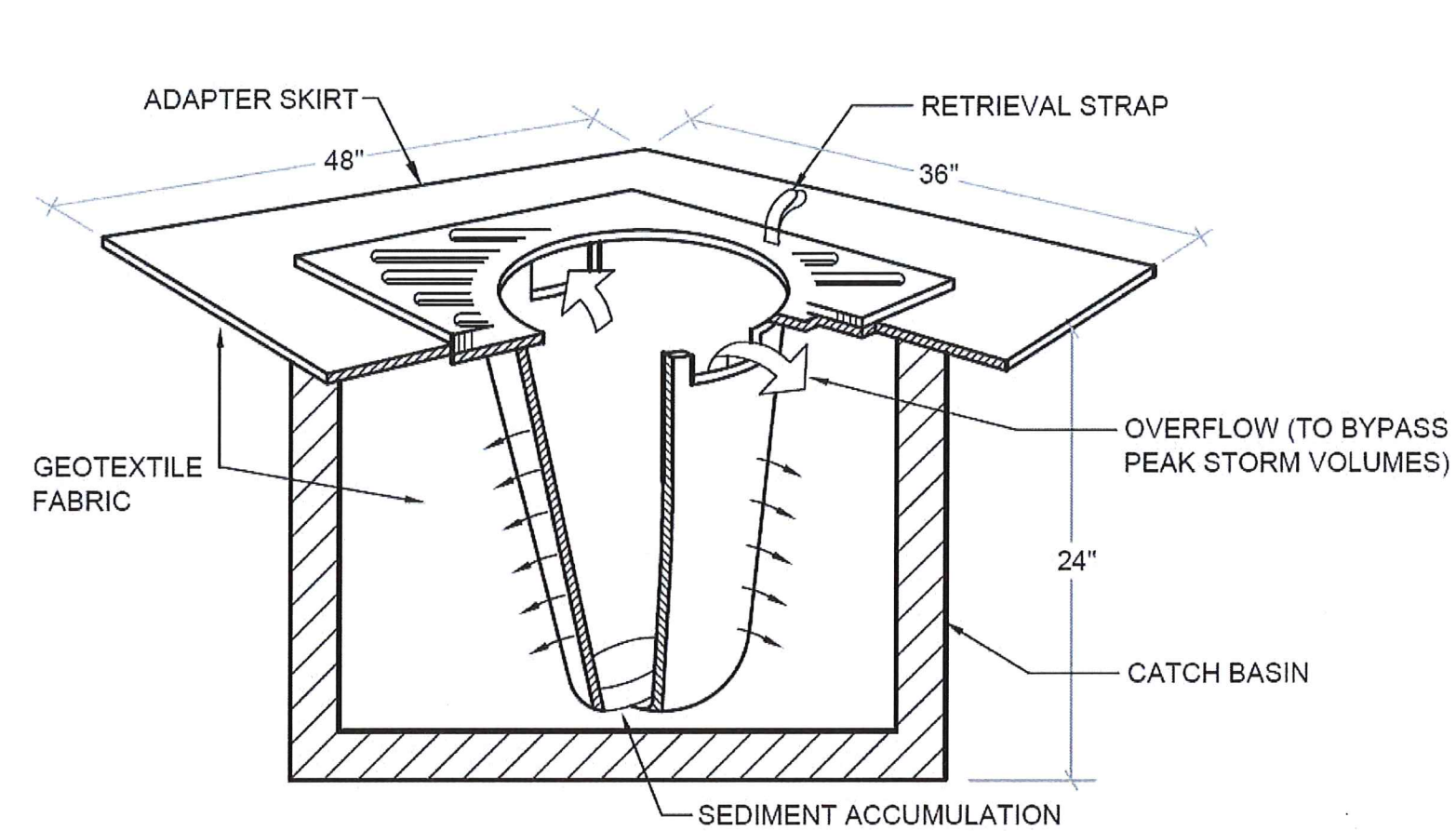


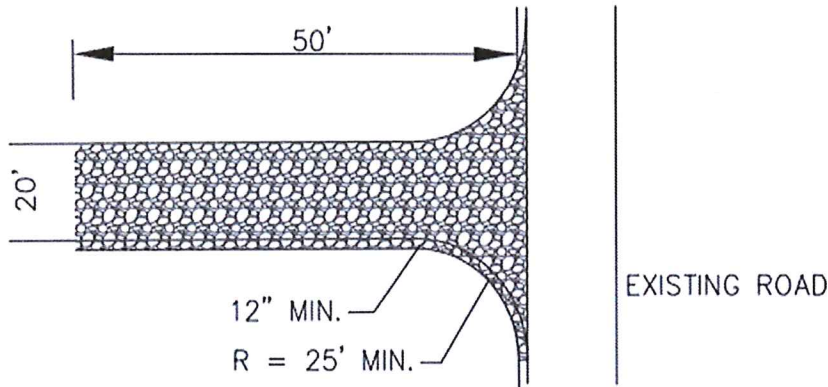
Silt Fence Detail



Inlet Protection Example



STABILIZED CONSTRUCTION ENTRANCE



- * MATERIAL SHOULD BE QUARRY SPALLS (WHERE FEASIBLE), 4 INCHES TO 8 INCHES SIZE.
- * THE ROCK PAD SHALL BE AT LEAST 12 INCHES THICK.
- * WIDTH SHALL BE THE FULL LENGTH OF THE VEHICLE EGRESS AREA (MINIMUM 20 FEET).
- * ADDITIONAL ROCK SHOULD BE ADDED PERIODICALLY TO MAINTAIN PROPER FUNCTION OF THE PAD
- * SEE FIGURE II-5.4 PER SPOKANE COUNTY STORMWATER MANAGEMENT MANUAL.